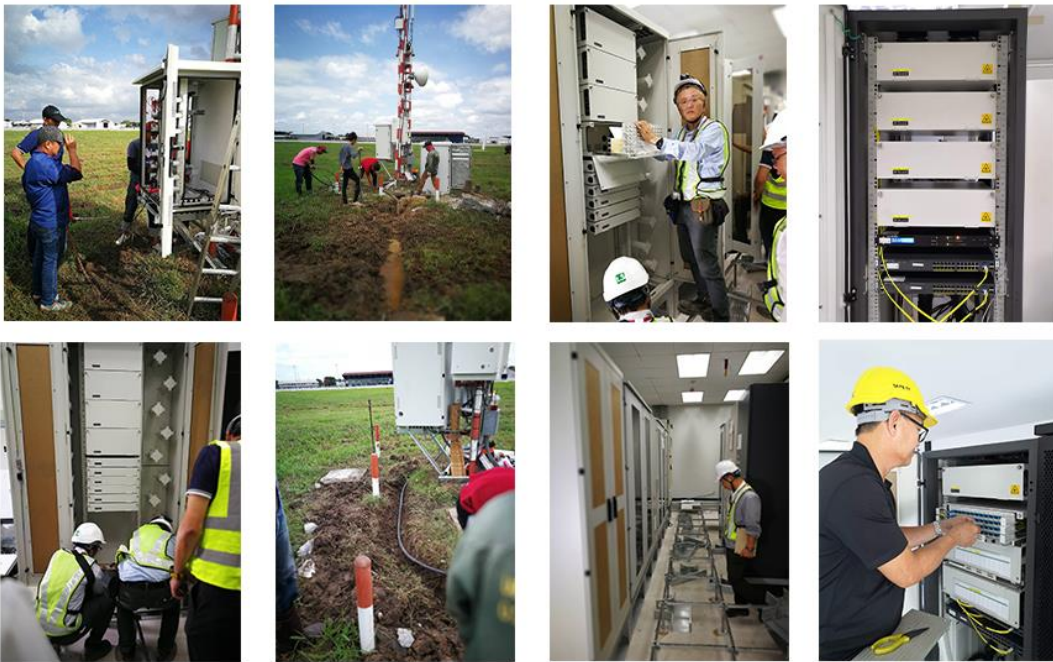


# RACK MOUNT 1U-10U

## *DRAWINGS-PRODUCT DETAILS-CODES*



# CONTENT

## PRODUCT DESCRIPTION

1. Rack Mount 1U
2. SPLICE PROTECTIVE SLEEVE
3. Rack Mount 3U – 10U

## fdf 1U RACK MOUNT sliding tray

1. 12-24 Port FC SC
2. 12-24 Port SC DUPLEX
3. 12-24 Port LC
4. 1U 12-24 Port FC SC
5. 1U 12-24 Port SC/APC Model: JKRM24SC

## RACK SPLITTER 1U

1. 1:16 Splitter Rack 1U
2. 1:8 Splitter Rack 1U
3. 1:4 Splitter Rack 1U
4. 1:8 Splitter Rack 1U
5. Mini 19inch Wall & Rack 6 Port SC type
6. 1:4 Splitter Rack 1U 4 ea.
7. 1U 48 Fibers LC/UPC
8. 1U 48 Fibers LC/PC OM4

## RACK MOOUNT

1. FDF Sliding 3U 48-60F & for PLC Splitter
2. FDF Sliding 3U 48-72 Fiber FC Type
3. FDF Sliding 3U 48-72 Fibers new design
4. FDF Sliding 3U 48-72 Fibers OM3 new design
5. FDF Sliding 3U 120 Fibers LC DX new design
6. FDF Sliding 4.5U 96 – 120 Fibers new design
7. FDF Sliding 8U 144 – 168 Fibers new design
8. FDF Sliding 1.5 U
9. FDF 1:16 Splitter Sliding Rack 1.5U
10. FDF 32 Splitter Sliding Rack 2U

## Product Description

### FDF RACK MOUNT 1U

The rack-mount enclosure was designed for indoor and FTTx for top density fix application. The rack enclosure is accessible for 12-24 fibers within the standard beige color.

The sliding receptacle has roller bearing slide hanging that simple to push or pull and additionally, they supply the reparation space for patch splice. The conjunction receptacle cab splice 12 fibers/ every receptacle, natural to feature the splice tray.

#### Features:

- 19" or 21" rack mount
- Terminates 12, 24 fibers and FTTx Splitter 1:8 SC/APC Connector
- Provides easy access for Connector FC, SC, LC, ST, E2000 panel.
- Pullout splicing tray for convenient splicing and field termination
- Equipped with cable management
- Removable door with life-off hinges
- Material – EG Steel with powder coating
- Size: CM: 12 & 24 port (1U) = 43(W) x 4.40(H) x 30(D)

## SPLICE PROTECTIVE SLEEVE



Splice sleeve for fiber-optic fusion splices are used to rebuild the primary coating for fiber to provide protection at the joint fusion area.

**Structure:** shrinkable sleeve and stainless-steel rod



### Generis Specifications:

Description	Typical diameter after heating $\Phi$ (mm)	Fusion tube $\Phi$ (mm)	Length of the stainless I (mm)	Length of Sleeve I (mm)
45 mm.	2.5	1.3	40	45
60mm.	2.5	1.3	55	60

Change of temperature	Temperature cycle = 1 cycle		-40 °C to 85°C 10 cycles 6 hours
-----------------------	-----------------------------	--	----------------------------------------

## Product Description

### FDF RACK MOUNT 3U – 10U

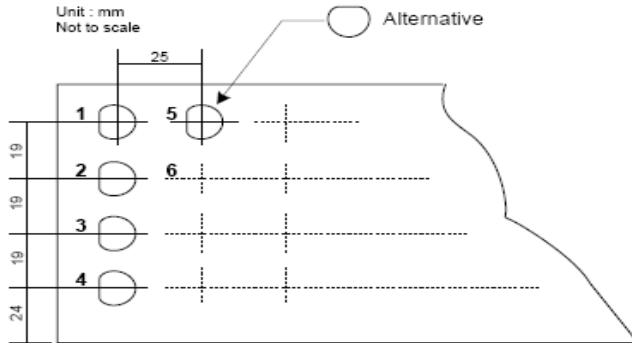
The rack-mount enclosure was designed for indoor and FTTx for high-density patching application. The rack enclosure is available for 12, 24, 48, 60, 72, 96, 120, 144 fibers in the standard beige color.

The sliding tray has roller bearing slide hanging which eases to push or pull, and they provide the patching area for patch splice. The splicing tray can splice 12 fibers/ each receptacle, natural to add the splice tray.

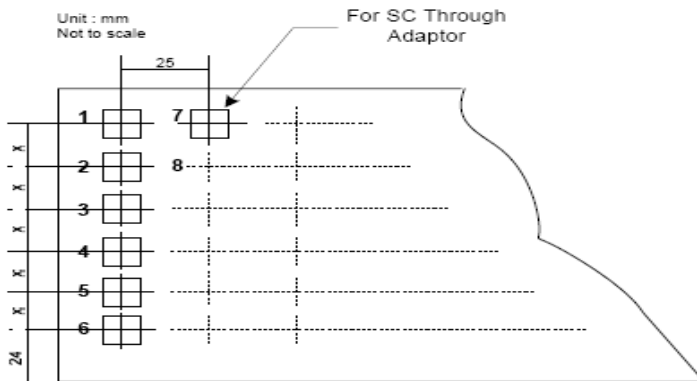
#### Features:

- 19” or 21” rack mount
- Terminates 12, 24, 48, 60, 72, 96, 120 up to 144 fibers
- For FTTx Splitter 1: 8, 1: 16 SC/APC Connector
- Provides easy access for Connector FC, SC, ST, LC, E2000 panel.
- Pullout splicing tray for convenient splicing and field termination
- Splice tray have fixed lock cannot removed left-right
- Equipped with cable management
- Removable door with life-off hinges
- Material – EG Steel Case 1.2mm with powder coating
- Size: MM:
  - 12 & 24 port (1U) = 43(W) x 4.40(H) x 30(D)
  - 12 & 24 port (1.5U) = 43(W) x 6.50(H) x 30(D)
- Material – Aluminum Case 1.5 mm with powder coating
  - Size: MM:
    - 24 – 48 Port (2U) = 430(W) x 8.70(H) x 30(D)
    - 48, 60, 72 port (3U) = 430(W) x 13.20(H) x 28.5(D)
    - 48, 60, 72 port (3U) = 430(W) x 13.20(H) x 30(D)
    - 96 & 120 port (4.5U) = 430(W) x 20.00(H) x 30(D)
    - 144 Port 7 U (FC) = 430(W) x 31.10(H) x 30(D)
    - 144 Port 8U (PS-PN SC) = 430(W) x 35.50(H) x 30(D)
    - 144 Port 10U (SC SX) = 430(W) x 44.40(H) x 30(D)

These below figures are intended to explain the spacing between a patching panel and an identification plate and guide the general design of the patching/splicing shelf.



**Fig.1** Typical FC patch panel of shelf unit (minimum spacing required)



**Fig.2** Typical SC patch panel of shelf unit (minimum spacing required)

## FDF RACK MOUNT 1U models + Product code



12-24 PORT FC SC



12-24 PORT SC DUPLEX



12-24 PORT LC



1U 12-24 PORT SC/APC MODEL: JKRM24SC

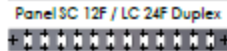
### Product Code: SC Type

CODE	Product Type	Capacity	Packing
JK RMS1U0012SC	ODF 12P Rack Mount 1U	12 Fibers	1 set/box
JK RMS1U0024SC	ODF 24P Rack Mount 1U	24 Fibers	1 set/box

### Product Code: with pigtail + SC/APC adapter

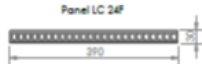
CODE	Product Type	Capacity	Packing
JK RMS1U0012SC	ODF 12P Rack Mount 1U	12 Fibers	1 set/box
JK RMS1U0024SC	ODF 24P Rack Mount 1U	24 Fibers	1 set/box

Product Code: LC Duplex



CODE	Product Type	Capacity	Packing
JK RMS1U0012LC	ODF 12P Rack Mount 1U	12 Fibers	1 set/box
JK RMS1U0024LC	ODF 24P Rack Mount 1U	24 Fibers	1 set/box

Product Code: LC Simplex



CODE	Product Type	Capacity	Packing
JK RMP1U0012LC	ODF 12P Rack Mount 1U	12 Fibers	1 set/box
JK RMP1U0024LC	ODF 24P Rack Mount 1U	24 Fibers	1 set/box
JK RMP1U0048LC	ODF 48P Rack Mount 1U	48 Fibers	1 set/box

Product Code: FC Type

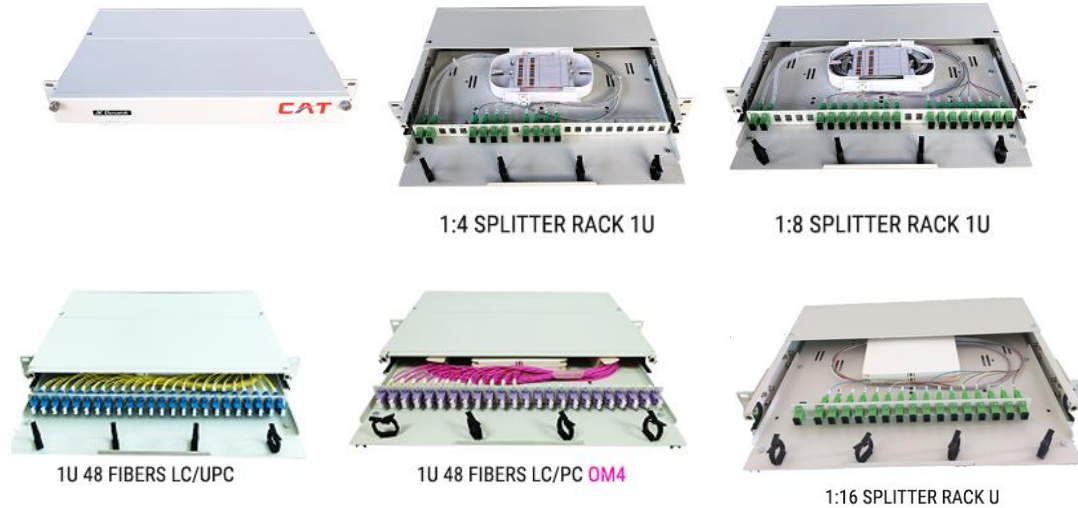
CODE	Product Type	Capacity	Packing
RA12-1USS-FC-E	ODF 12P Rack Mount 1U	12 Fibers	1 set/box
RA24-1US-FC-E	ODF 24P Rack Mount 1U	24 Fibers	1 set/box

Product Code: with pigtail + FC adapter

CODE	Product Type	Capacity	Packing
RA12-1US-WPTAD-FC-2	FDF 12P RACK MOUNT 1U @with Pigtail + Adapter FC 2 ea.	12 Fibers	1 set/box
RA12-1US-WPTAD-FC-4	FDF 12P RACK MOUNT 1U @with Pigtail + Adapter FC 4 ea.	12 Fibers	1 set/box
RA12-1US-WPTAD-FC-6	FDF 12P RACK MOUNT 1U @with Pigtail + Adapter FC 6 ea.	12 Fibers	1 set/box
RA12-1US12DFC-SET	FDF 12P RACK MOUNT 1U @with Pigtail + Adapter FC 12 ea.	12 Fibers	1 set/box
RA12-1UP24DFC12-SET	FDF 12P RACK MOUNT 1U @with Pigtail + Adapter FC 12 ea.	24 Fibers	1 set/box
RA24-1UP24DFC24-SET	FDF 24P RACK MOUNT 1U @with Pigtail + Adapter FC 24 ea.	24 Fibers	1 set/box



## FDF RACK MOUNT Splitter 1U models + Product code



### Product Code: PLC Splitter type A

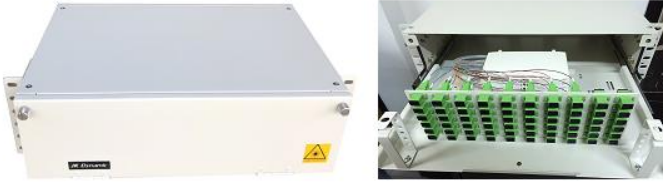
CODE	Product Type	Capacity	Packing
SPT1-2SCATA	PLC SPLITTER 1-2 SC/APC Type A	customizable	1 set/box
SPT1-4SCATA	PLC SPLITTER 1-4 SC/APC Type A	customizable	1 set/box
SPT1-8SCATA	PLC SPLITTER 1-8 SC/APC Type A	customizable	1 set/box
SPT1-16SCATA	PLC SPLITTER 1-16 SC/APC Type A	customizable	1 set/box
SPT1-32SCATA	PLC SPLITTER 1-32 SC/APC Type A	customizable	1 set/box
SPT1-64SCATA	PLC SPLITTER 1-64 SC/APC Type A	customizable	1 set/box

### Product Code: PLC Splitter type B

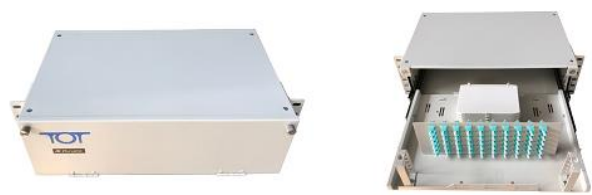
CODE	Product Type	Capacity	Packing
SPT-SCA-BX1-2	PLC Splitter 1:2 SC/APC Type B	customizable	1 set/box
SPT-SCA-BX1-4	PLC Splitter 1:4 SC/APC Type B	customizable	1 set/box
SPT-SCA-BX1-8	PLC Splitter 1:8 SC/APC Type B	customizable	1 set/box
SPT-SCA-BX1-16	PLC Splitter 1:16 SC/APC Type B	customizable	1 set/box
SPT-SCA-BX1-32	PLC Splitter 1:32 SC/APC Type B	customizable	1 set/box
SPT-SCA-BX1-64	PLC Splitter 1:64 SC/APC Type B	customizable	1 set/box

Requirement for mini wall & rack, please contact sales officer

FDF RACK MOUNT 1.5U+ 3U – 10U models + Product code



FDF SLIDING 3U 48-60F FOR PLC SPLITTER



FDF Sliding 3U 120 Fibers LC DX *new design*



FDF SLIDING 3U 48-72 FIBERS FC type *new design*



FDF SLIDING 8U 144-168 Fibers *new design*



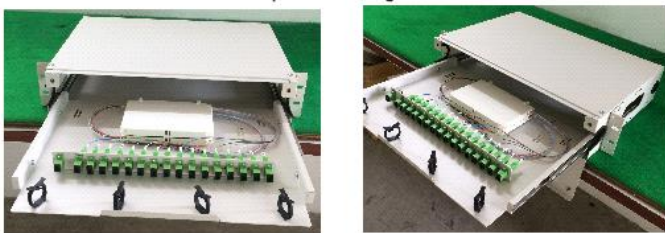
FDF Sliding 1.5U



FDF Sliding 4.5U 96 – 120 Fibers *new design*



1 : 16 Splitter Sliding Rack 1.5 U



1:32 Splitter Sliding Rack 2U

CODE	Product Type	Capacity	Packing	Net Weight	Gross Weight
JK RM1.5U0012	FDF 12P Rack Mount 1.5U	12 Fibers	1 set/box	5.70 kg.	6.00 kg.
JK RM1.5U0024	FDF 24P Rack Mount 1.5U	24 Fibers	1 set/box	5.75 kg.	6.05 kg.
JK RM3U000048	FDF 48P Rack Mount 3U	48 Fibers	1 set/box	4.95 kg	5.30 kg.
JK RM3U000060	FDF 60P Rack Mount 3U	60 Fibers	1 set/box	5.00 kg.	5.35 kg.
JK RM3U000072	FDF 72P Rack Mount 3U	72 Fibers	1 set/box	5.05 kg.	5.40 kg.
JK RM4.5U00096	FDF 96P Rack Mount 4.5U	96 Fiber	1 set/box	6.70 kg.	7.10 kg.
JK RM4.5U00120	FDF 120P Rack Mount 4.5U	120 Fiber	1 set/box	6.80 kg.	7.20 kg.
JK RM6U000144	FDF 144P Rack Mount 7U	144 Fibers	1 set/box	10.05 kg.	10.40 kg.

Product Code: with Pigtail + Adapter FC

CODE	Product Type	Capacity	Packing	Net Weight	Gross Weight
JK RM1.5U0012	FDF 12P Rack Mount 1.5U	12 Fibers	1 set/box	6.00 kg.	6.30 kg.
JK RM1.5U0024	FDF 24P Rack Mount 1.5U	24 Fibers	1 set/box	6.35 kg.	6.65 kg.
JK RM3U000048	FDF 48P Rack Mount 3U	48 Fibers	1 set/box	5.30 kg	6.55 kg.
JK RM3U000060	FDF 60P Rack Mount 3U	60 Fibers	1 set/box	5.35 kg.	6.85 kg.
JK RM3U000072	FDF 72P Rack Mount 3U	72 Fibers	1 set/box	5.40 kg.	6.90 kg.
JK RM4.5U00096	FDF 96P Rack Mount 4.5U	96 Fiber	1 set/box	9.05 kg.	9.45 kg.
JK RM4.5U00120	FDF 120P Rack Mount 4.5U	120 Fiber	1 set/box	9.75 kg.	10.95 kg.
JK RM6U000144	FDF 144P Rack Mount 7U	144 Fibers	1 set/box	10.40 kg.	14.35 kg.