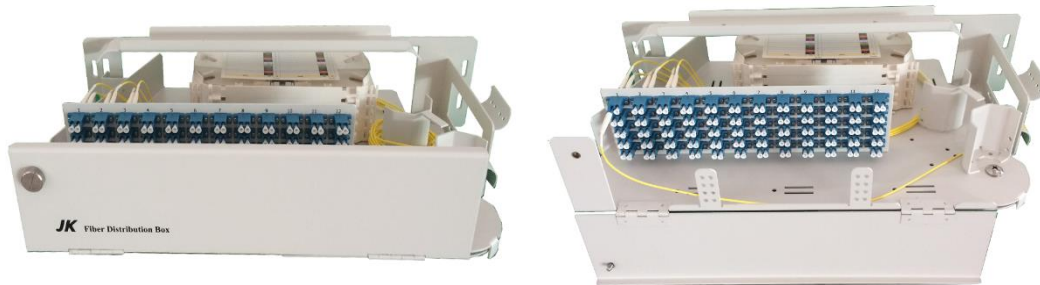


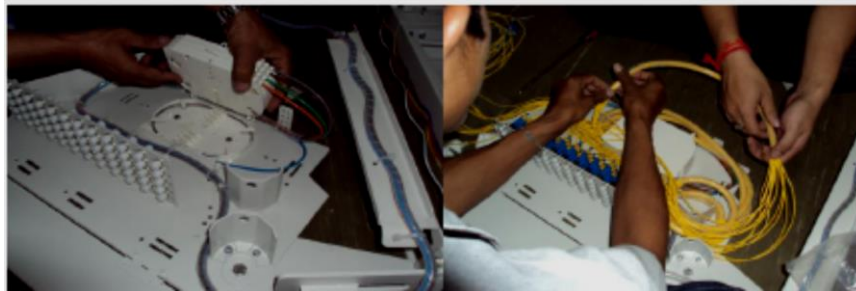
Optical Rack 48-120 Ports

(Swing type)

This FDF is built under indoor conditions that are used either in TOT exchanges or buildings. The FDF is responsible for protecting optical fibers from environmental and mechanical strain.



1. 19 "type rack mount swing • 12, 24, 48, 60,72, 120 fiber ports.
2. Gives easy access to the FC, SC, LC, E2000 module connector.
3. For convenient splicing and field termination, pullout splicing tray.
4. Equipped with cable control.
5. Type of swing base.
6. Material: 2 mm powder-coated steel or aluminum.
7. Dimensions: MM: 12 – 120 Ports = 490(W)x 95(H)x 29(D)



The spacing between the through adaptor and the splicing tray or fiber management devices on the pigtail side, the spacing between the adapters, connectors and pigtails must be kept as much space as possible for convenient access.

When using a FC / UPC connector, each capacity of the patching / splicing shelf shall be equipped with a maximum of 48 fibers (4 rows x 12 columns) and a fiber count

The patching panel is designed to be easy to remove in order to change the adaptor from FC / UPC to SC / UPC or LC without changing the shelf unit's main part.

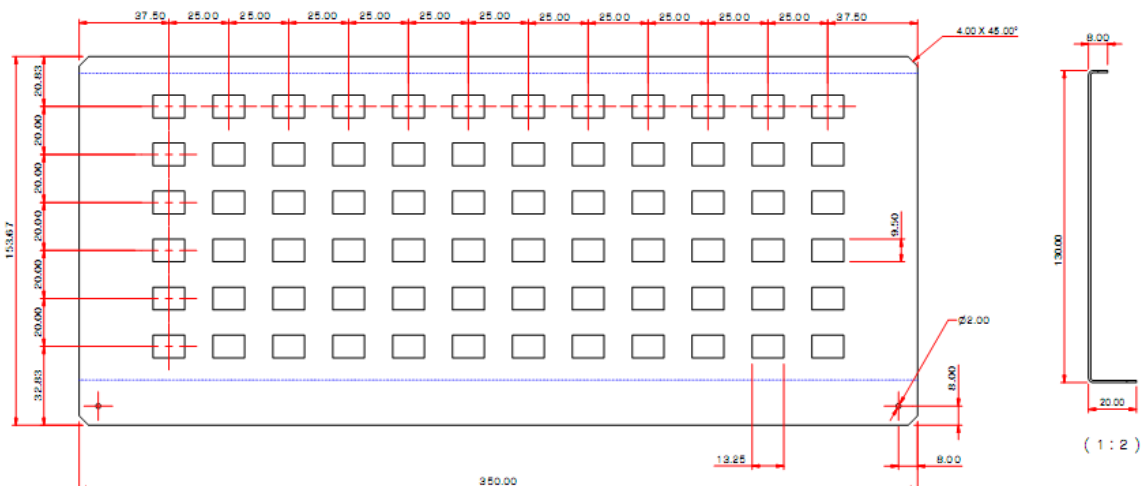
Patching/ Splicing shelf Materials

Drawer: frame of metal material is made of steel, or similar and non-metal material is allowed.

Tray: Polycarbonate, PBT or ABS By adaptor: Ni (nickel) plated brass or stainless steel (300 series gray or stronger corrosion resistance material for metal part and ceramic alignment sleeve).

Both metal hardware and metal parts are resistant to the corrosive effects they can experience in ordinary use.

Patch Panel for Shelf unit SC, LC Connector



(1 : 2)

Patch Panel for Shelf unit FC Connector

